

HALL 7

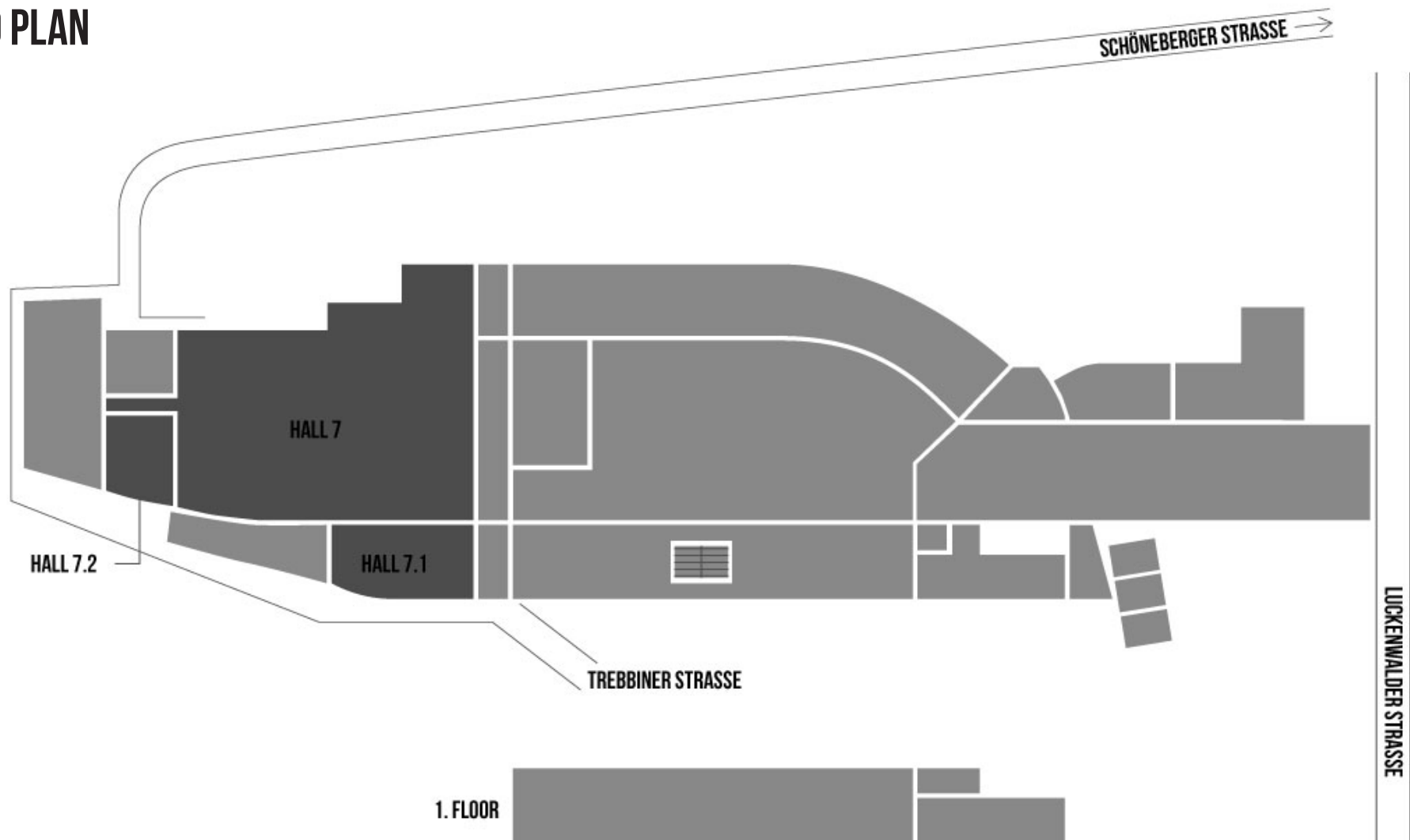
STATION-BERLIN | EIGHT HALLS, 23.000 SQUARE METRES OF SPACE. INFINITE POSSIBILITIES.

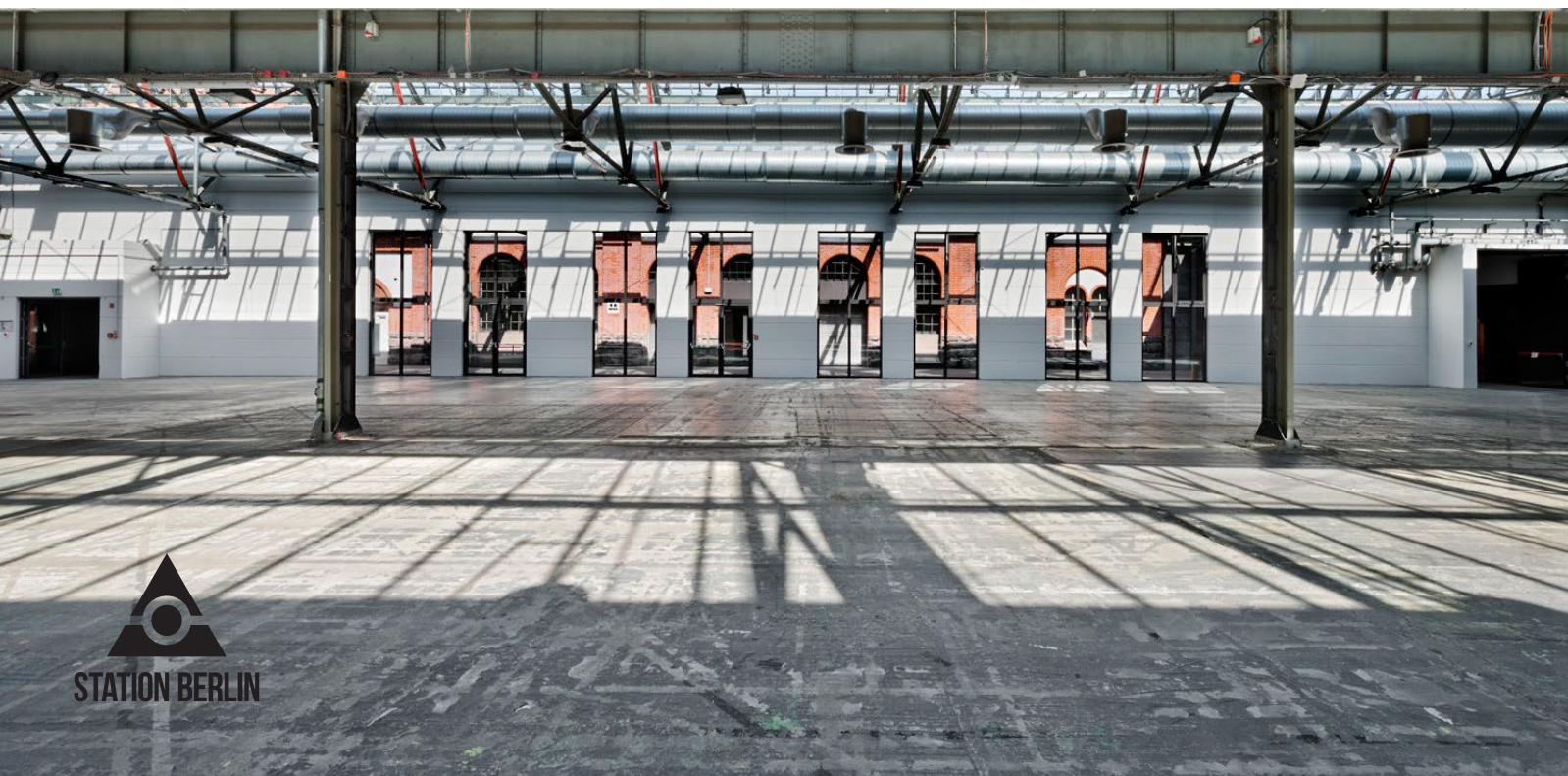
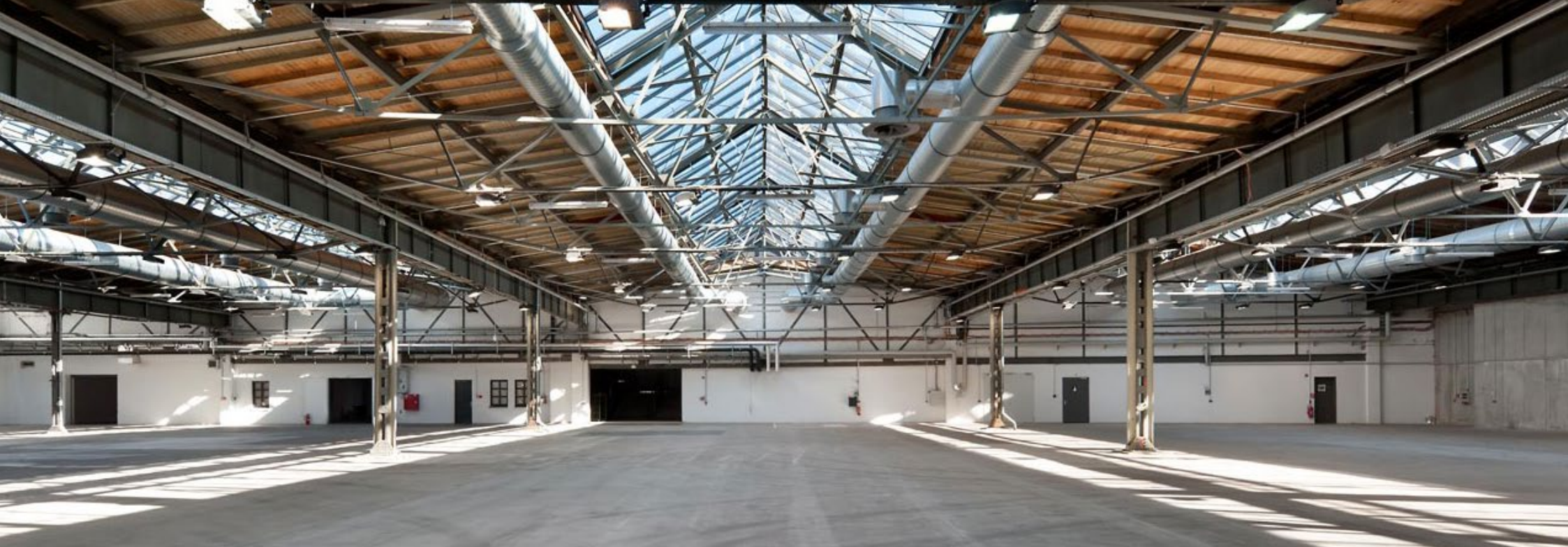


STATION BERLIN

HALL 7

GROUND PLAN





HALL 7

INFO

The former track beds and platforms were dismantled, creating an additional 2,000 square metres of space. Today, the hall offers a total of 4,140 square metres of consecutive space in the city centre.

Spacious, light-flooded and efficient in every respect – following its expansion in 2011, Hall 7 is the most modern hall at STATION-Berlin.

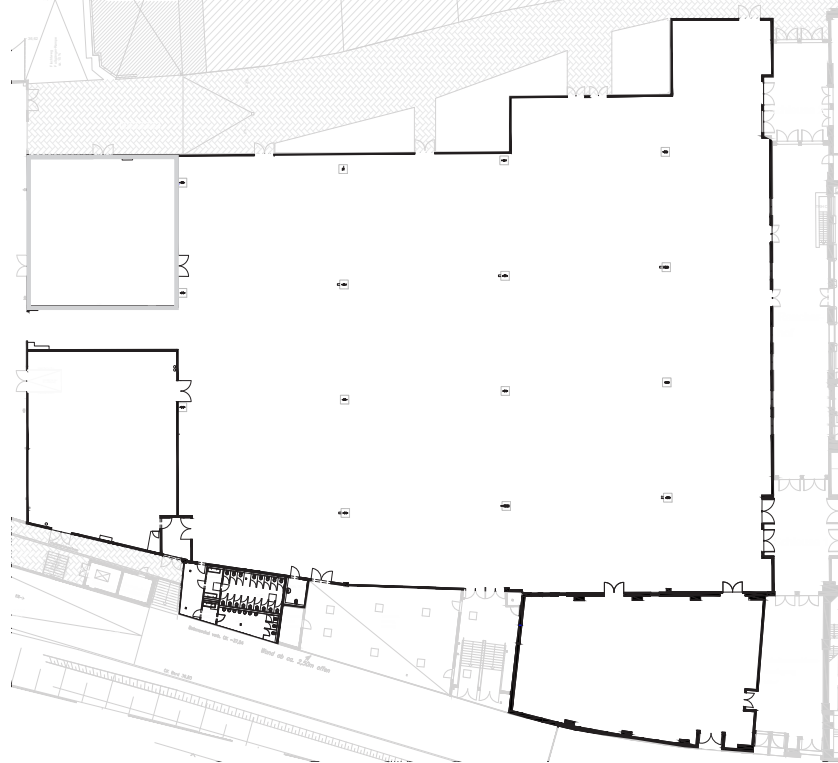


HALL 7

USE

Hall 7 is accessible via entrances from Hall 1 and Hall 3 and, thanks to its ideal floor plan, is perfect for large trade fairs and conferences.

Directly adjacent, Hall 7.1 (487 m²) and Hall 7.2 (404 m²) expand the wide range of possible usage options. Together, the halls form a flexible ensemble of rooms with a total area of 5,031 square metres, providing the optimal setting for any event.



HALL 7

FACTS

Floor space	4.140 sqm
Dimensions	74 x 68 m
Clearance height	9,60 m
Main beam height	5,00 m
Lamp height	5,30 m
Level	Ground Floor
Barrier-free access	Yes
Disabled toilets	Yes

SEATING*

Row	2.600 Seats
Banquet	1.700 Seats
Without seating	3.800 Standing

*Reference point. The maximum room capacity depends on the specific room concept and has always be considered individually.

OTHER

Power	Yes
Water	Yes
LAN/WiFi	Yes/Yes
Truck/car access (via ramp)	Yes/Yes
Heating/Cooling	Yes/Yes
Blackout	Optional